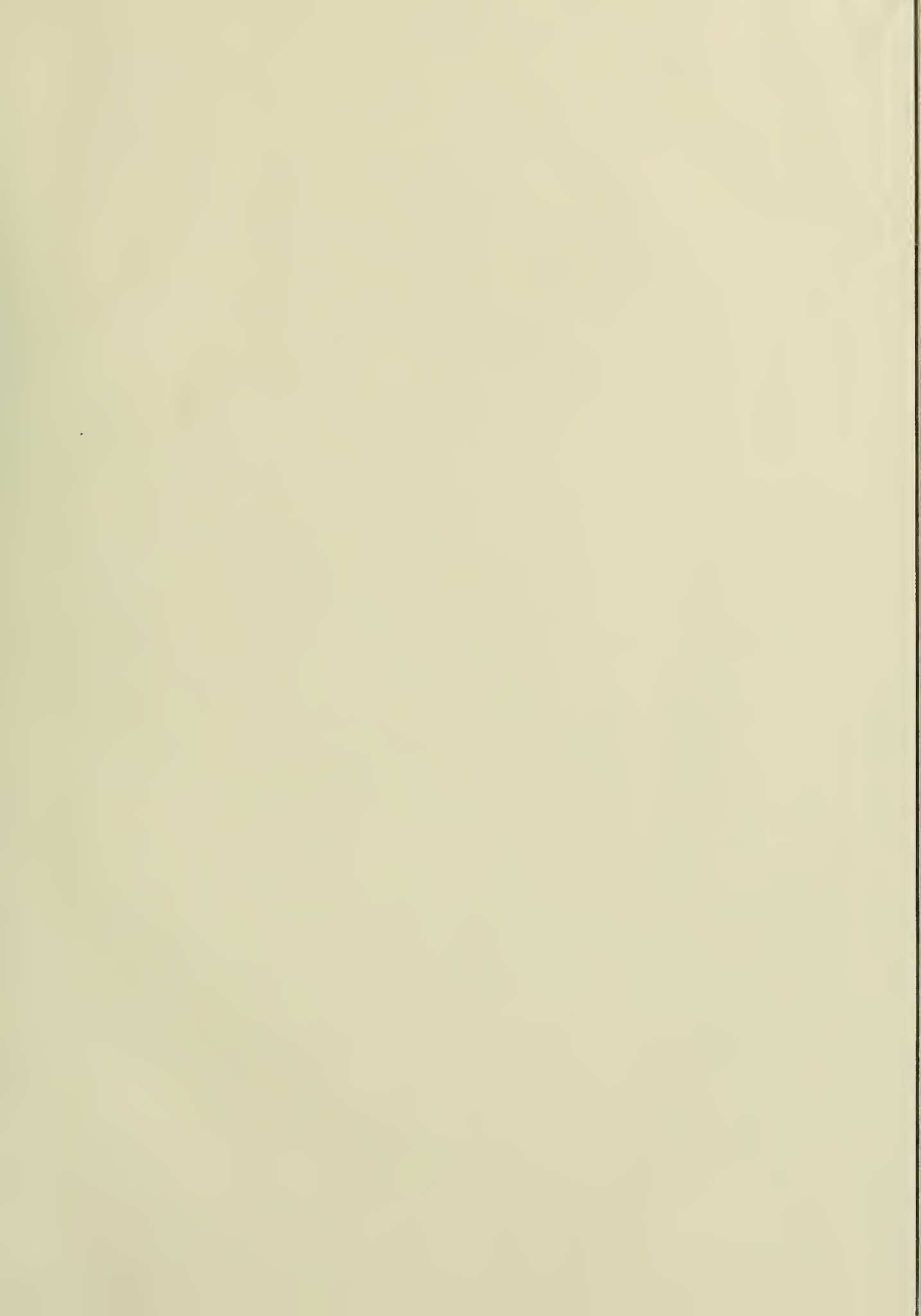


NA 7130

.C83









A Home
of Your Own



452
1277

A HOME



home of your own!

What comfort, assurance, and security these words impart to the man who really wants to fulfill his obligation to the world!

To raise and provide for a family is the duty that every man owes to society. It is the foundation of civilization and progress. There is no surer guarantee of success in fulfilling this important obligation than acquiring "a home of your own."

The housing conditions that exist at present have prompted The Corn Exchange National Bank to formulate the Home Savings Plan, in which you have now enrolled, and which we hope will be the means of helping you to get the home that you desire.

As a part of this plan we present you with this book of suggestions. The homes illustrated represent various types of modern dwellings. By looking them over carefully and selecting the one that appeals most to your taste, and fits best the needs of your family, you can then arrange your home savings plan more intelligently.

If you care to, you can get estimates on the cost of constructing the house that most appeals to you, and in this way be able to figure definitely the cost and how long it will be before you become a real HOME OWNER and know the feeling of self-assurance that goes with it.

The Corn Exchange National Bank

SAVINGS DEPARTMENT

N. W. Corner La Salle and Adams Streets

CHICAGO

A Family is Judged by it's Home



THE exterior and interior of the ideal cottage pictured above is but one of hundreds of examples of home-wisdom acquired through thrift and saving.

MAR 17 1921

© CIA613073



A Rarely Distinctive Bungalow Home

HALF the pleasure in a home lies in its exterior attractiveness and harmony of design, and from that standpoint, too, this house must surely win admiration.

It stands for sun and light and cheer, inside and out. The 11 foot pergola porch supported by large stucco pillars, and the deep French doors are an assurance of this. The long, broad bricked porch floor laid in pattern design, with concrete border and the domered roof are features that you will like also. By the way, there are windows in the gabled ends which you cannot see here, assuring ample air circulation for the attic.

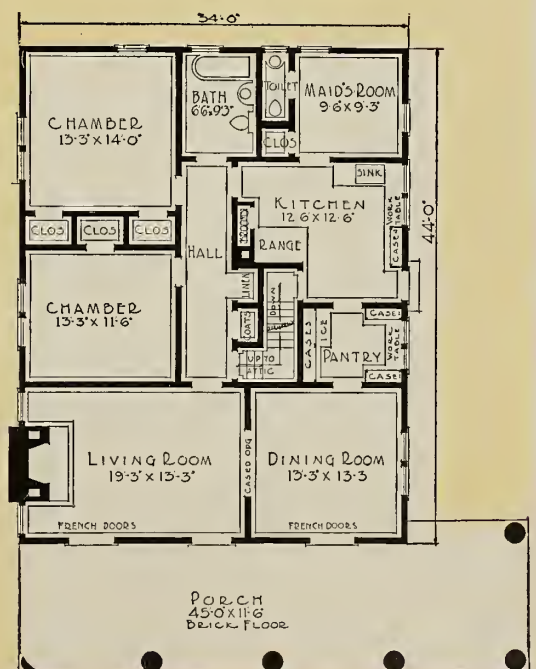
You have observed the charm of the outside. What about the interior? Come in. From the front porch you enter the big living room, where the full French doors admit a flood of sunlight. This room is distinguished by the big fireplace, with bookshelves and casement windows above on either side. The dining room is no less attractive, and the pantry between the dining room and kitchen keep the latter entirely apart.

This service room is especially well equipped, affording a place for everything, even your refrigerator. Specially designed cases equip it perfectly, while in the kitchen additional cupboard facilities are provided.

Opening from the kitchen is the outside entrance, the passage to the basement, and also the door to the maid's cozy room, with private toilet. This means absolute privacy and comfort for both family and servant.

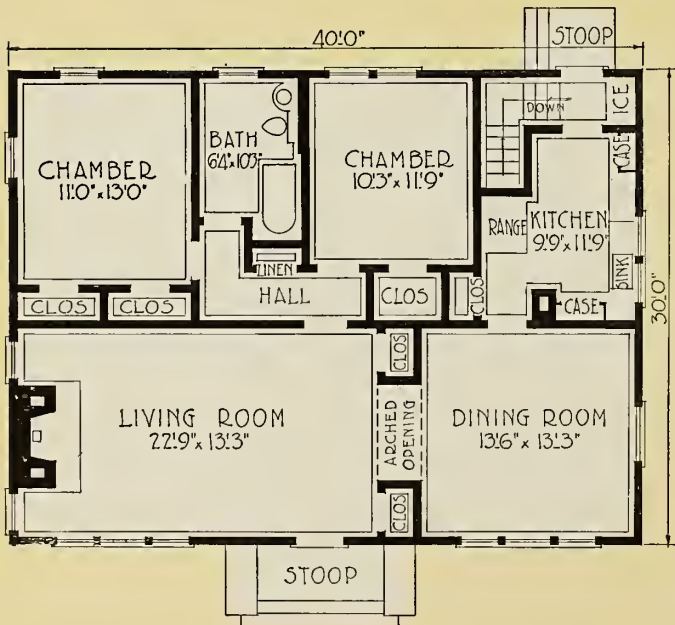
With all its roominess there is a commendable compactness about this house. A door leads from the living room into the long hall, which connects the two big chambers and the bath. It also gives access to a convenient coat closet, a linen closet of special design, to the kitchen, and also to the stairs leading to the floored attic, extending over the entire house.

The bedrooms are large, with three closets between them, and two and three windows each. From either it is just a step to the bath, which is complete with everything conveniently arranged.





A Charming Bungalow of Unique Design



HERE the sloping eaves, the wood brown of the shingles, the triple windows on either side of the entrance, all greet you pleasantly as you approach. The casement windows on either side of the fireplace chimney and the double window just back of this, are some of the features that the illustration does not show clearly, but that should not be overlooked when considering the appearance of the exterior. The shingled walls extending to the ground is an important factor in giving the desired effect—an exposed foundation would be less in good taste.

The large living-room, with the fireplace and high casement windows on either side, the well designed plaster arch just opposite the convenient coat closet and telephone booth, and the triple window toward the front leave nothing to be desired here.

In the dining room of this bungalow no one will have the experience of being so seated at the table as to be in his own light, which is an unpleasant feature in the room lighted only at one side. The triple windows give much to the effect of a dining porch.

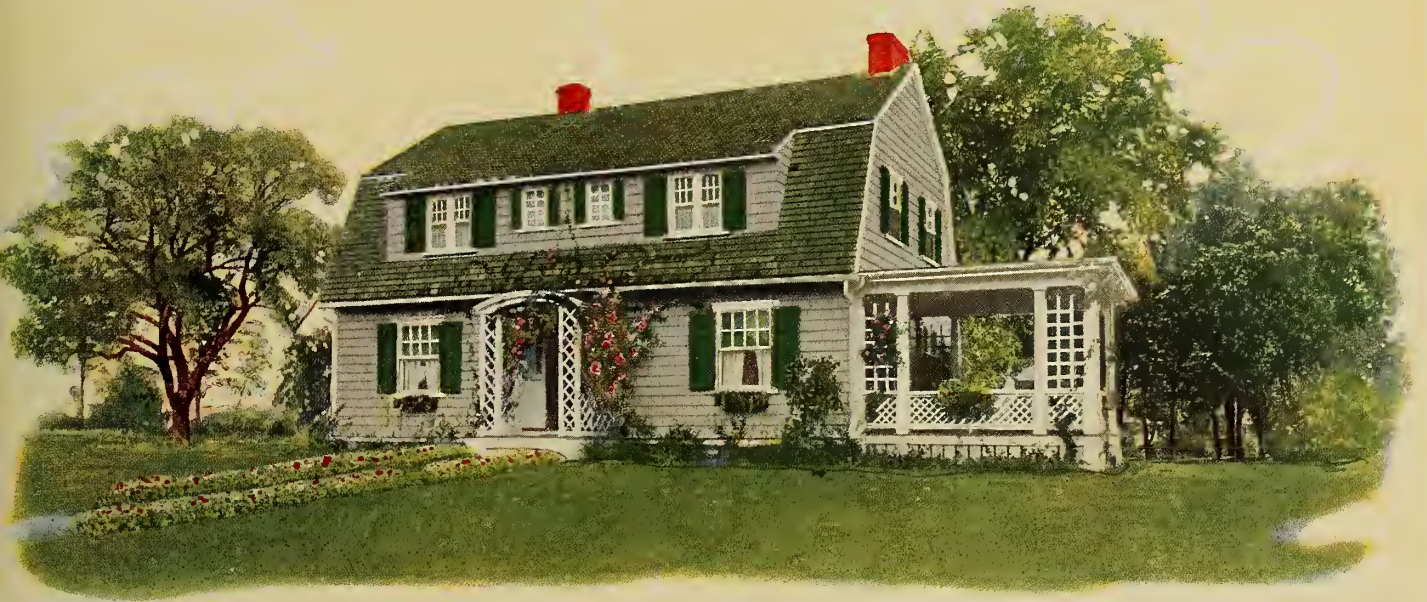
Every inch of space has been made use of in the kitchen, for there is an unusual amount of cupboard room. The sink and work table with built-in case on either side are ideally placed under the double window. The refrigerator space is just a step away, but as far as possible from the range. There is really little opportunity for disorder in this kitchen. Even the broom closet, near where the range will stand is an illustration of this.

The basement is easily accessible from the kitchen—it is not necessary to go outside, and neither is it necessary for the ice man or furnace man to disfigure the freshly cleaned kitchen floor. Since the basement extends under the entire house it gives ample room for laundry, furnace room, coal room, and fruit cellar.

Returning to the upper floor, you will notice that the bed rooms each have two windows, and unusual closet room. The arrangement of the bath is quite ideal. This part of the house is entirely removed from the rest by a well arranged hall, connecting with the living-room. The linen closet opens off of this also.



A HOME OF YOUR OWN



A Dutch Colonial Home of Rare Charm

SOME houses are just houses; others proclaim the fact that there is a home within. This home announces itself at first glance, and expresses the idea of cheer and hospitality. The entrance bespeaks a much warmer greeting than that given by the one time custom of carving "Welcome" over the house door.

The true Dutch Colonial gambrel roof, the shingled walls, shuttered windows, and wide porch make this one of the most charming of places.

From the attractive stoop one enters a vestibule having a large coat closet to the left. This arrangement leaves the hall proper free from drafts, unencumbered and usable as a part of the living room when so wanted. This hall space sets off the open stairway most splendidly also.

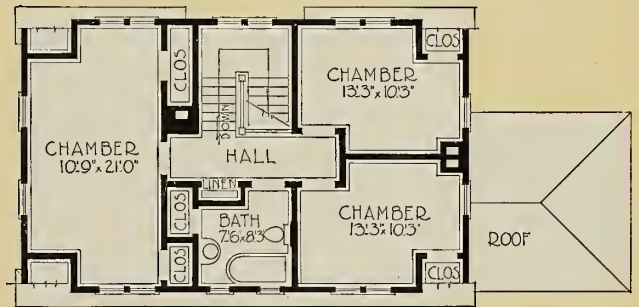
A large fireplace occupies the center of the outside wall of the living room, with French doors at the right which lead to the comfortable living porch. The position of the porch at the side insures greater comfort and privacy.

Besides these French doors, there are in the living room, three large Colonial windows of the type found throughout the downstairs.

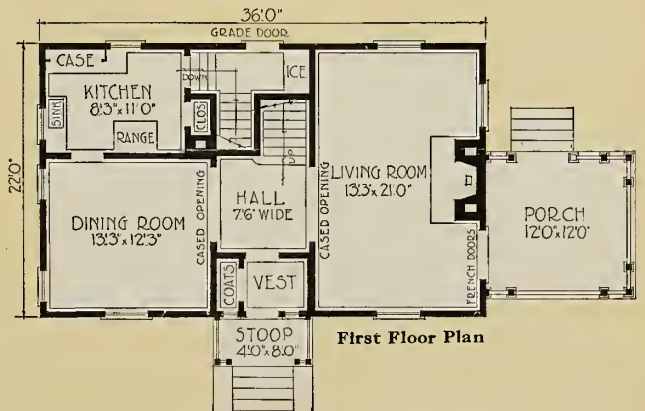
The dining room is equally well lighted, carefully planned and cheerful. It is of a size suited to the needs of this house.

The kitchen is well arranged with special built-in kitchen case and even a built-in broom closet. Three steps bring one down to the space for the refrigerator and the rear grade door, where the ice man can enter.

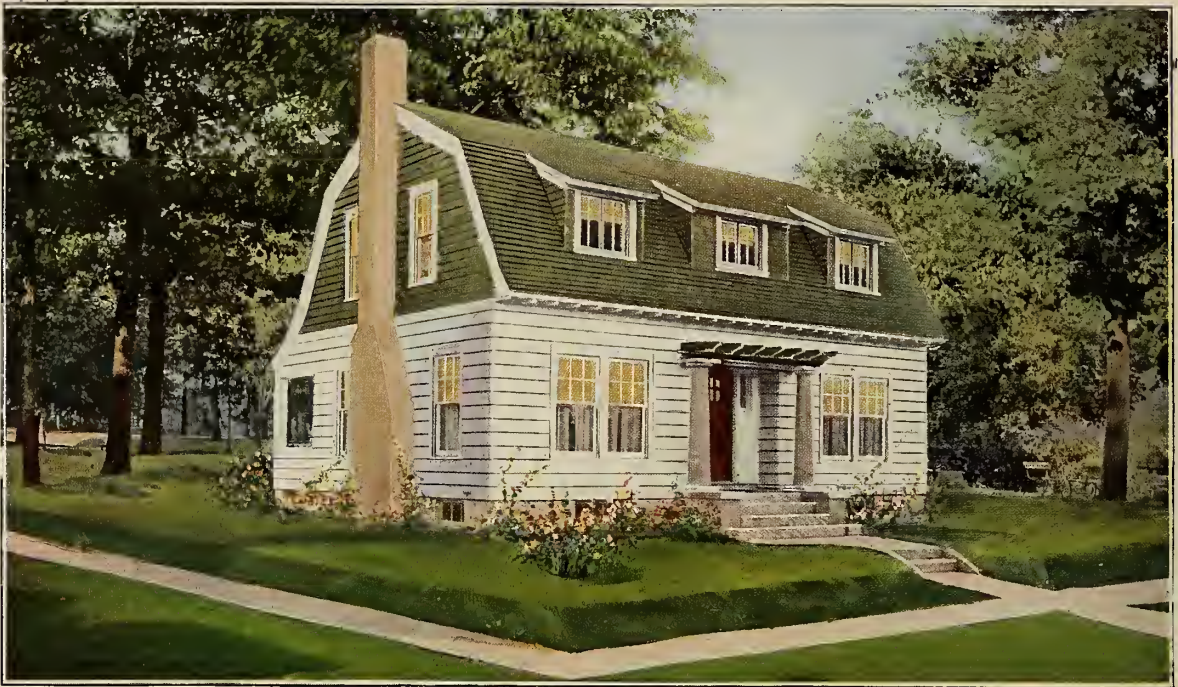
Upstairs are the bath, linen closet and three chambers, besides the hall which is well lighted by the windows on the stair landing. The bathroom as well as bedroom has unusual closet space.



Second Floor Plan



First Floor Plan



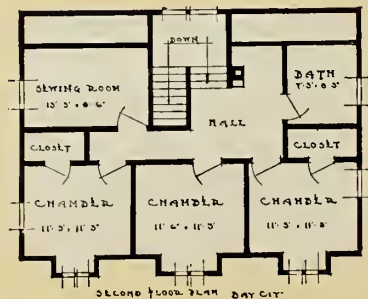
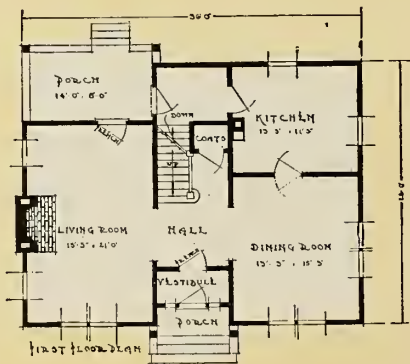
A Simple Home of Dutch Colonial Type

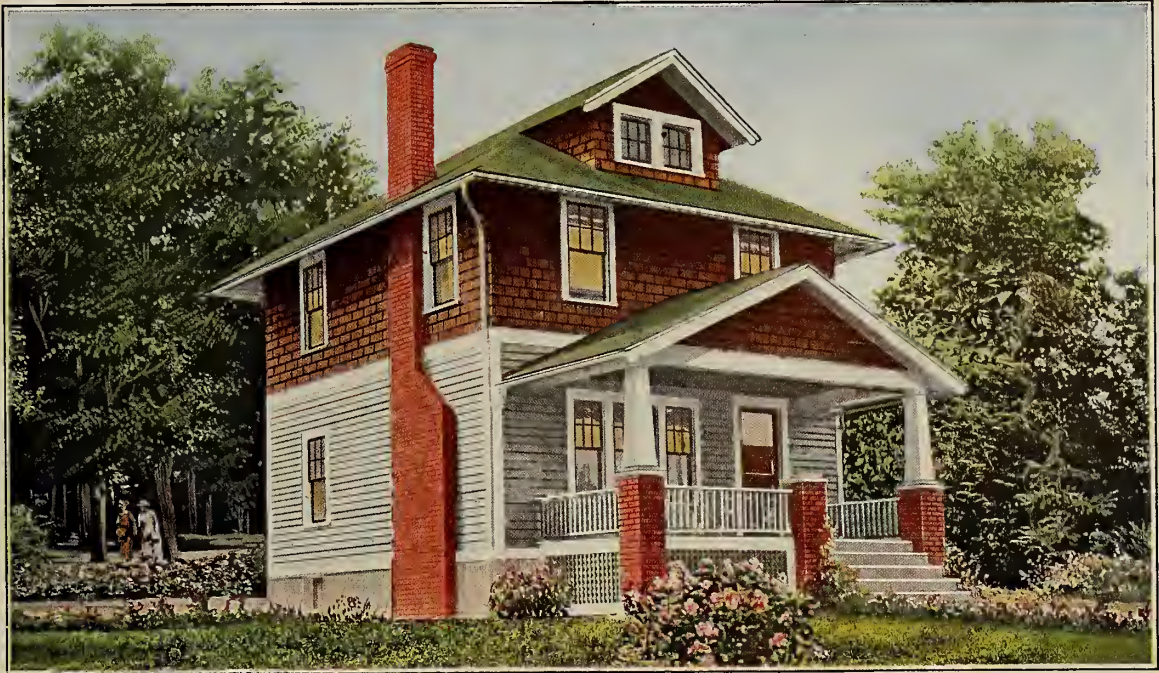
Designed along the chaste and refined lines of the later Dutch Colonial, with gambrel roof and wide siding below the eaves, this house offers plenty of room while maintaining the low horizontal line which assures a beautiful exterior.

The recessed front porch with its massive columns and pergola roof invites us into the large central hall, placed between the living-room and dining-room, with the colonial mahogany and white stairway, facing us. The living-room is ample in size, with a cheery fireplace in the center of the outside wall, while to the right a French door leads to the brick paved porch, which is placed facing the garden to insure privacy.

The dining-room is symmetrically designed, and the kitchen is properly placed to serve both dining-room and porch, and so that the housework may be done with the minimum of steps.

The second floor shows three large bedrooms with ample closet space, a conveniently placed sewing room, and bath room.





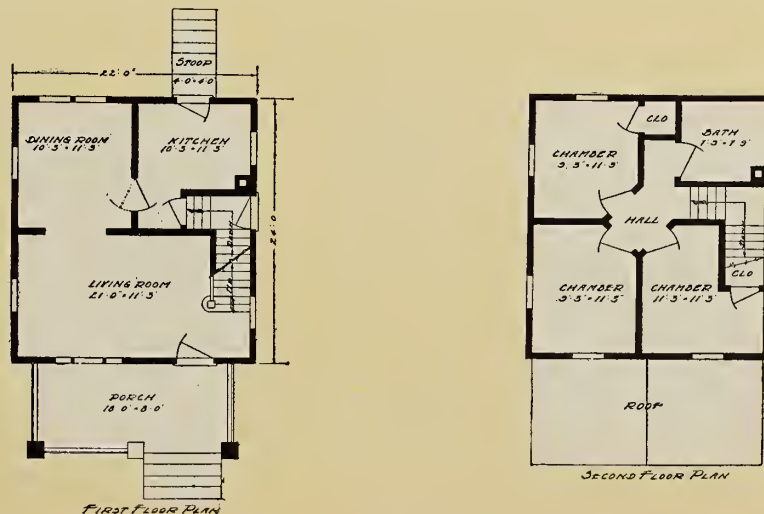
An Economical House with Simple Lines

The plan of this house is developed from the square, thus arriving at the most economical use of the space. The exterior is developed along simple lines, using siding and shingles in an effective manner, and the outside chimney and large front porch are beautiful and attractive features.

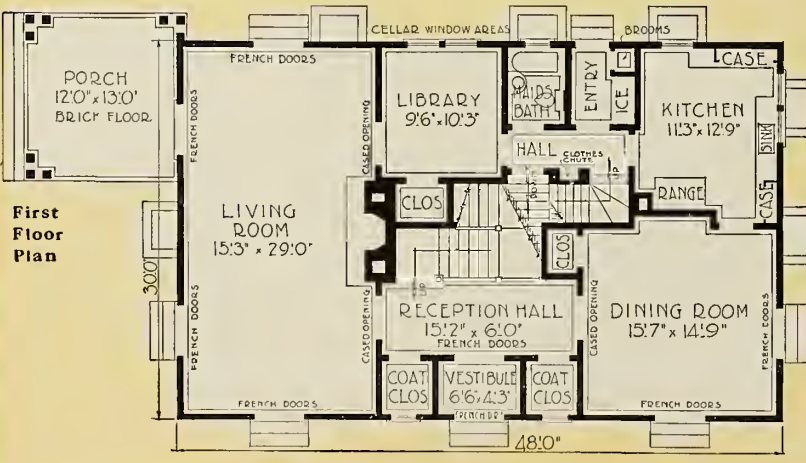
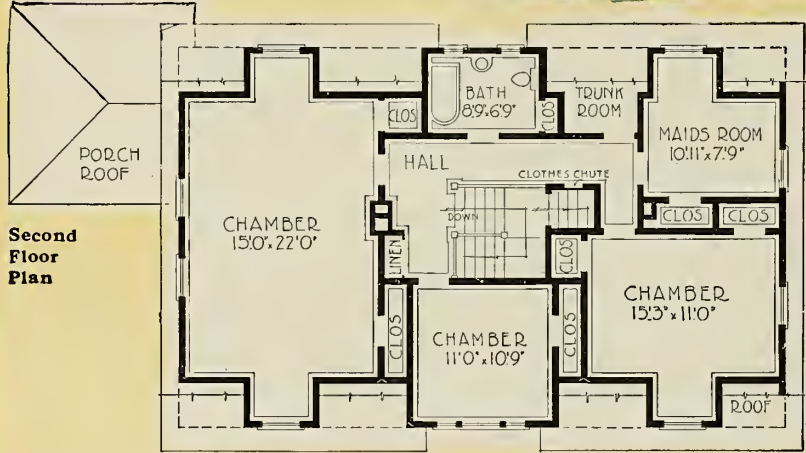
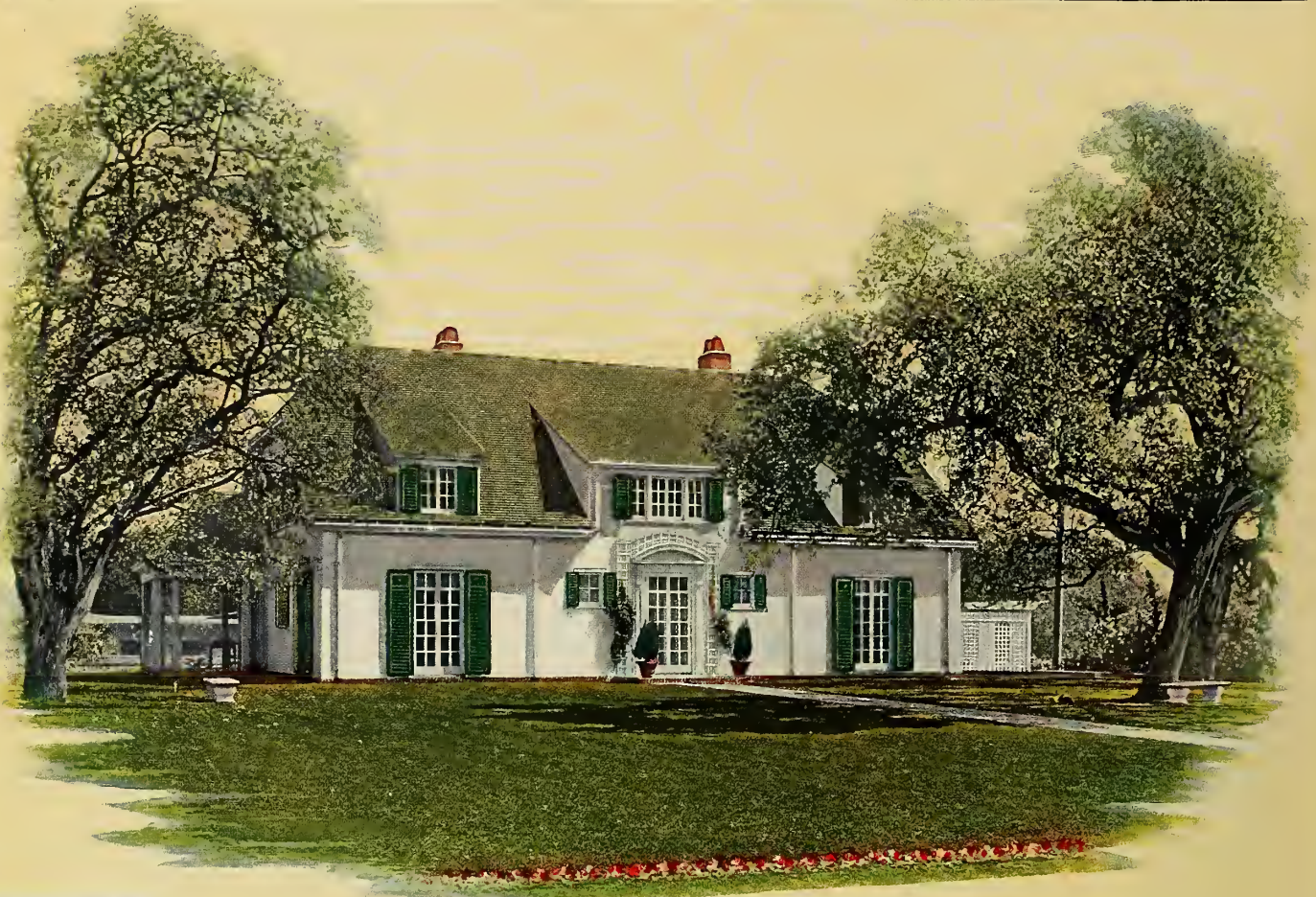
The living-room extends across the front of the house, with the dining-room opening from it, giving a wonderfully roomy effect. The stairway is conveniently placed near the entrance, with the rear stairway and grade entrance beneath.

The kitchen is a convenient workshop of ample size, and the thrifty housewife will appreciate the saving of steps made possible by omitting the pantry and using a kitchen cabinet, serving directly to the dining-room through the double swinging doors.

The second floor has three bed-rooms, two of which have cross ventilation from two windows.



A HOME OF YOUR OWN



The House Beautiful

WITHOUT a doubt this is one of the most beautiful houses in America today. Even in the illustration this house must appeal to you for its distinctiveness and for its absolute harmony in every detail. As you look at it, you feel that the long sloping roof, the dormers, the French windows and entrance, are all especially suited to one another, and to this house in particular.

The low set stucco walls without an exposed foundation, the area ways for the basement windows, the porch to the side and rear, all further the effect of the French style of architecture.

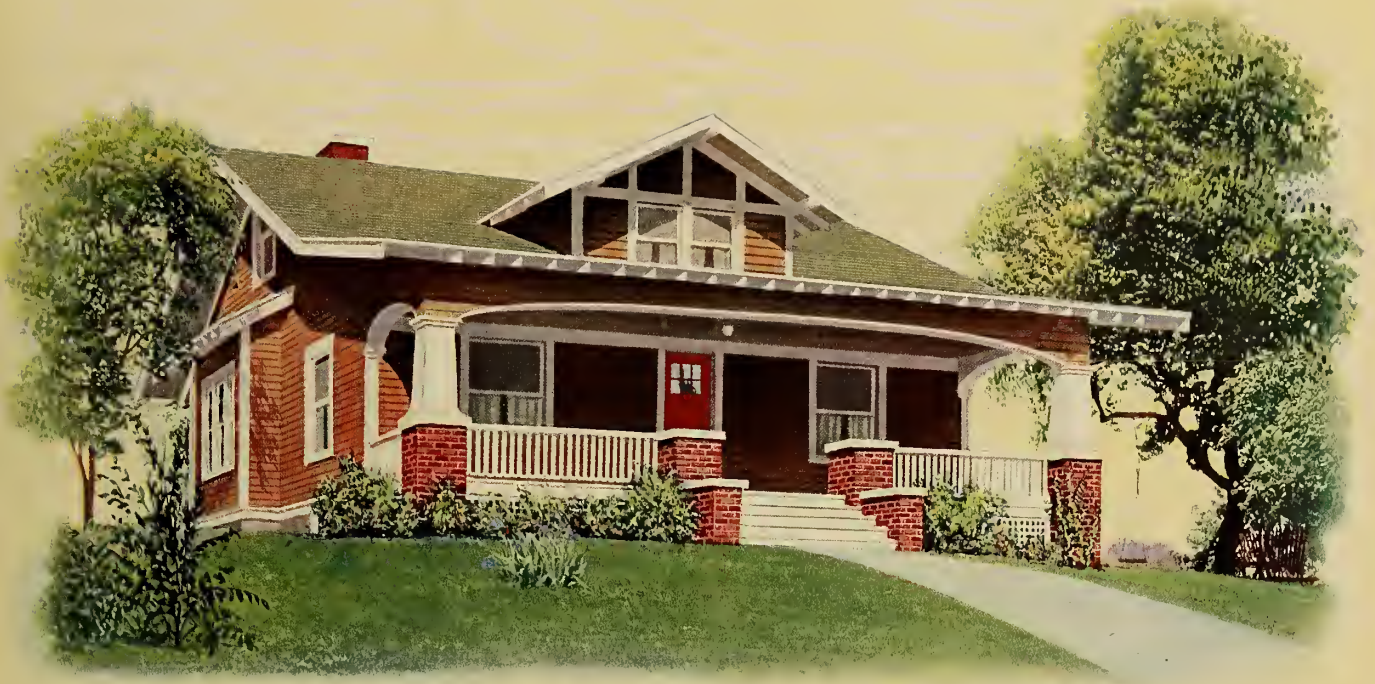
A glance at the floor plan here gives you an idea of its unusually fine arrangement. The immense living-room, with its French windows opening in three directions, its fireplace and the porch beyond leaves nothing to be desired. The library just back of this splendid big room is secluded as such a room should be, and because of its location can lend itself to various uses. It is easily accessible to all parts of the house, and has a closet of its own.

One of the especial features of this home is the excellent plan for the reception hall, which is left free to be what its name implies, because of the vestibule and two coat closets opening off of it. One entire side of the hall is given to the beautifully designed stairway, a pleasing idea in this particular style of house.

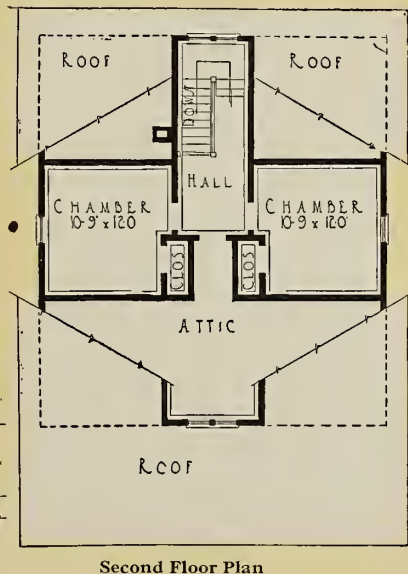
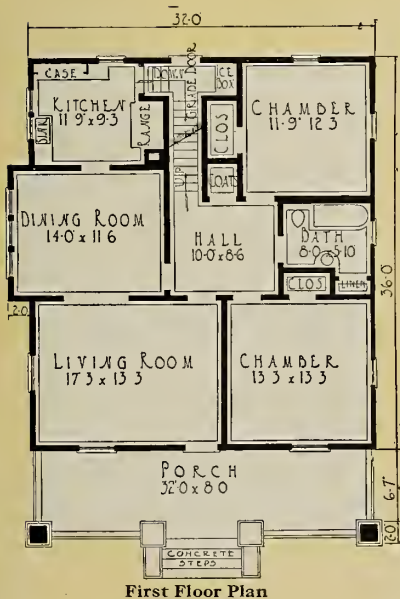
The kitchen has two big built-in cases, with the sink and work table each under a window.

The plan of the back hall is worthy of especial attention. Here is a place for the refrigerator, next the kitchen door, a broom closet and clothes chute, and from here one reaches the maid's bath, the basement stairway, as well as the rear flight of the duplex stairway, an entrance to the library and the outside door.

The rectangular upstairs hall brings one to four unusually attractive rooms, the bath with its linen closet and trunk room. The clothes chute opens here also. The room to the left, almost as large as the living-room, is equally well lighted and has two good sized closets, as has the next largest chamber. The room in the center front is particularly attractive because of the triple window extending almost across one entire wall. The maid's room has not been neglected either in light, closet space or cross ventilation.



A Very Popular 4-Bedroom Bungalow



PICTURE to yourself the pleasure of owning and living in a home as charming as this. A more attractive exterior would be hard to imagine. It is artistic and homelike in every line. Everything about this house bespeaks well-balanced architecture that emphasizes the home feeling.

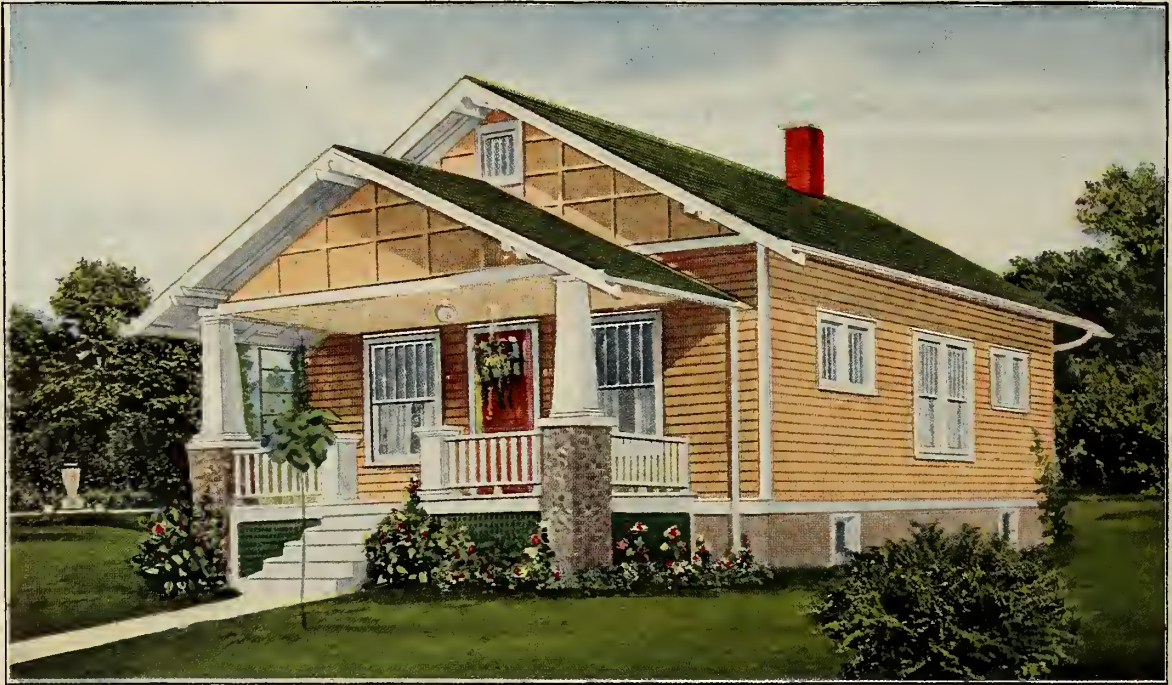
The appearance of this house is emphasized by the finish. The timbered front dormer and the projecting bay window in the dining room wall are added features.

This home is delightful throughout its interior also. From the big comfortable arched porch with its view unobstructed by many pillars, one enters the friendly well planned living-room. A wide opening beyond invites one to the comfortable dining-room, lighted by the group of triple windows in the bow, which forms one entire side of the room—an especially attractive window arrangement.

The kitchen is an unusual model of convenience. The sink and work table are each under a window and arranged in the most convenient manner, with the sink to the left of the table and the large built-in ease. The rear door, which is on the same level as the walk, serves as a rear entrance to the house and to the roomy basement below.

The central hall gives direct access to a large coat closet, dining-room and living-room, bed rooms and bath. From here the stairs lead to the second floor, where there are two more bed rooms and an attic, well lighted by the windows in the dormer. These three rooms all open from the upper hall.

All the first and second floor bed-rooms are well provided with closets of good size, and with plenty of furniture space. It is quite unusual that a home occupying no more ground space than this bungalow should offer four splendid sleeping rooms, with even a well lighted attic space besides.



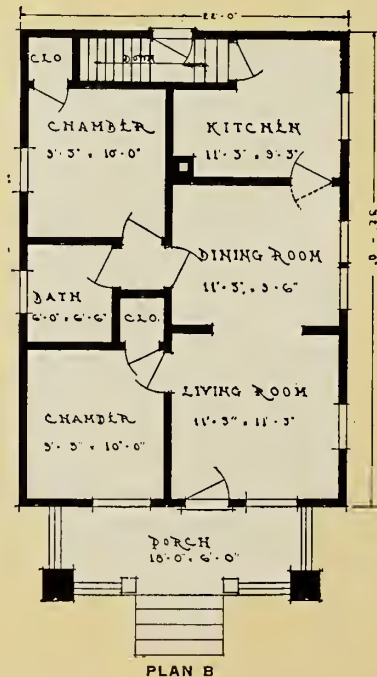
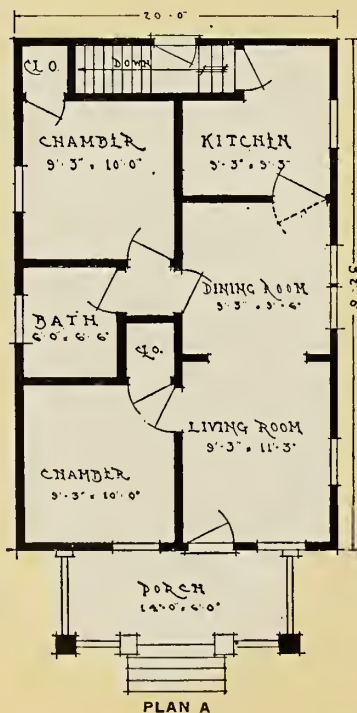
An Attractive Bungalow of Unique Design

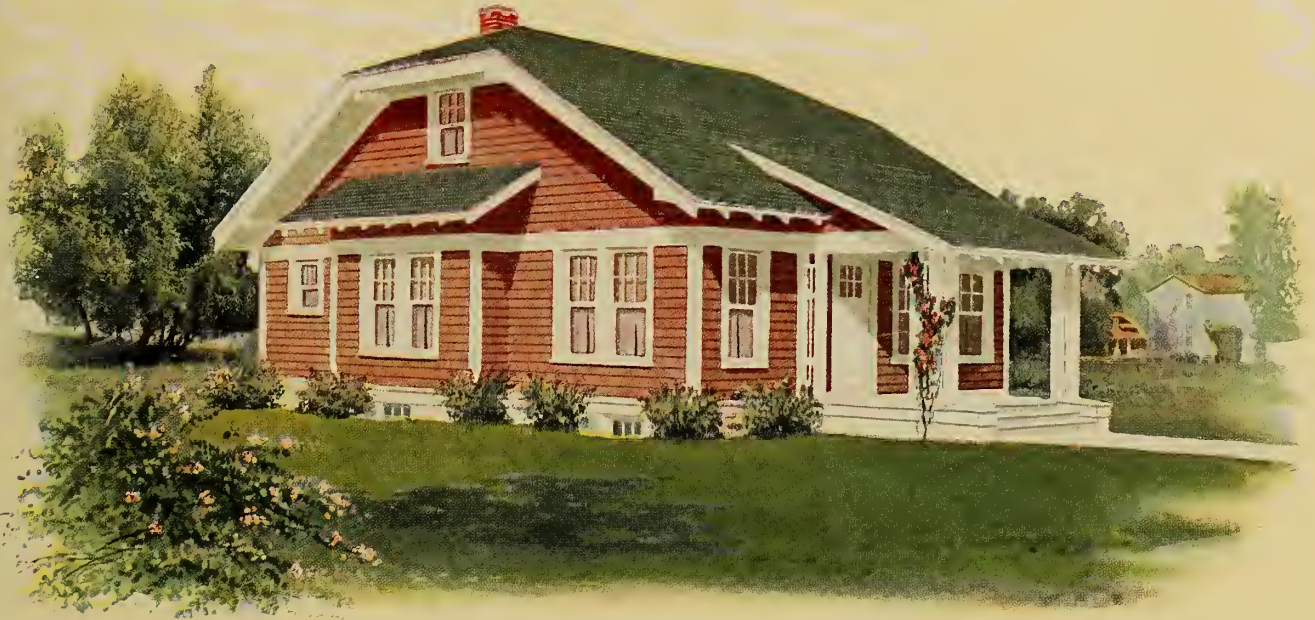
This bungalow is one of the most economical and attractive that we have seen. It is particularly adapted for use on a narrow lot, as it is but twenty feet over all for plan "A" and twenty-two feet for Plan "B".

The living-room and dining-room are of generous dimensions, and being thrown together make a still more roomy effect.

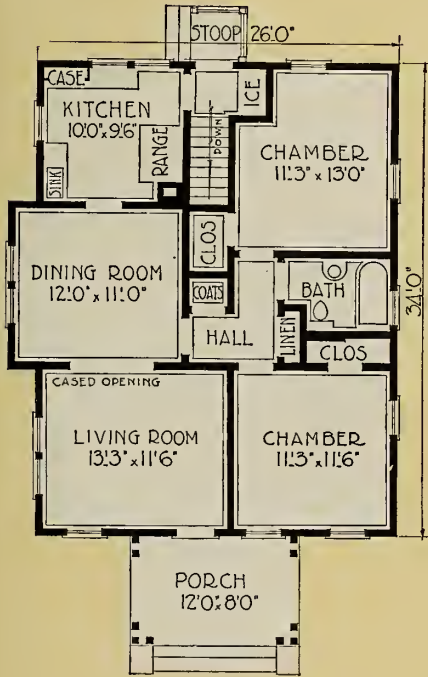
The kitchen is roomy and well lighted, while the basement stairway also affords access to a grade entrance, a convenience which will be especially appreciated by the man of the house.

The bedrooms are of ample size, each having a large closet, while the bath is most conveniently located.





A Skillfully Designed and Planned Bungalow



Floor Plan

IN this home you see another fine bungalow. You need only to study the floor plan and illustration to find those things which are so necessary to your venture—style, beauty, economy, convenience, comfort.

The outside walls are made most attractive by covering with shingles. The broad sweeping lines of the gable roof, continuing over the front porch, bears out the pleasing outlines most prominently.

In the shortened ridged line of the roof and subsequent treatment given in the battered gable ends there is an effect which is decidedly unique, and which is very popular because it so greatly adds to the charm of the exterior.

Over the dining room projection is placed a quaint hood giving protection and contributing to the beauty of the home.

The rooms are all well proportioned and of good size. All have windows in each outside wall, which permits cross ventilation. These rooms will be very pleasant—plenty of air and light everywhere. The front and rear

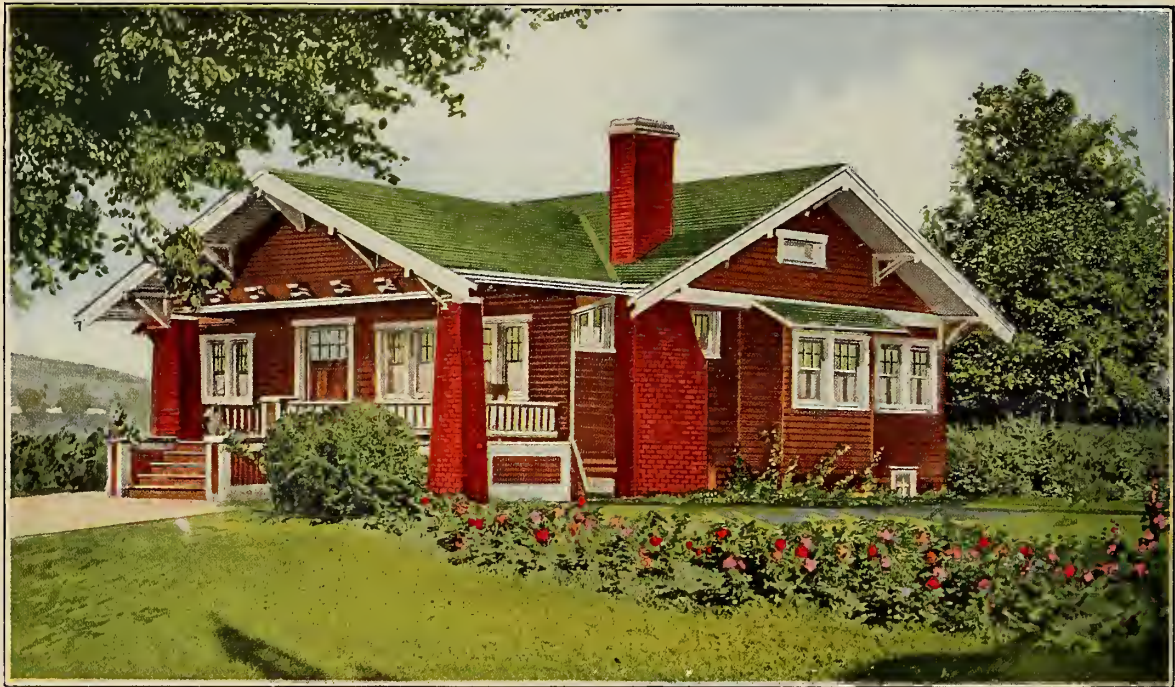
doors are glazed bungalow doors of beautiful pattern.

Every housewife who studies this plan will be interested in the perfectly arranged kitchen. Notice also the Linen Closet in this home—here it is most conveniently placed in the hall between the two bed rooms and bath and just a step from the dining room.

The bedrooms and bath are separated from the living rooms by the hall—you will easily understand the advantages of this planning. Each bedroom has a big closet—there is also a handy coat closet in the hall just as you enter from the dining room.

From the rear stoop, entrance is made thru the entry, in which there is space for the ice box, into the kitchen. Leading directly down from the entry is the cellar stairway—accessible from the kitchen or outside direct.

The front porch is but three steps high—the house is built low to intensify the low-down effect, conforming to Bungalow construction.



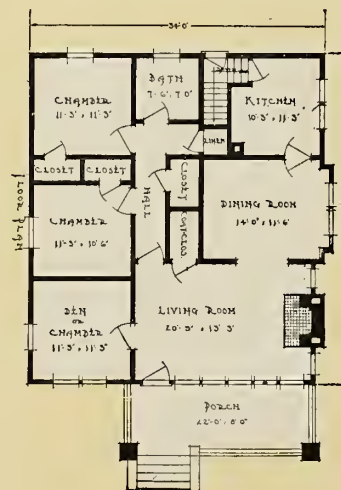
A Typical Bungalow

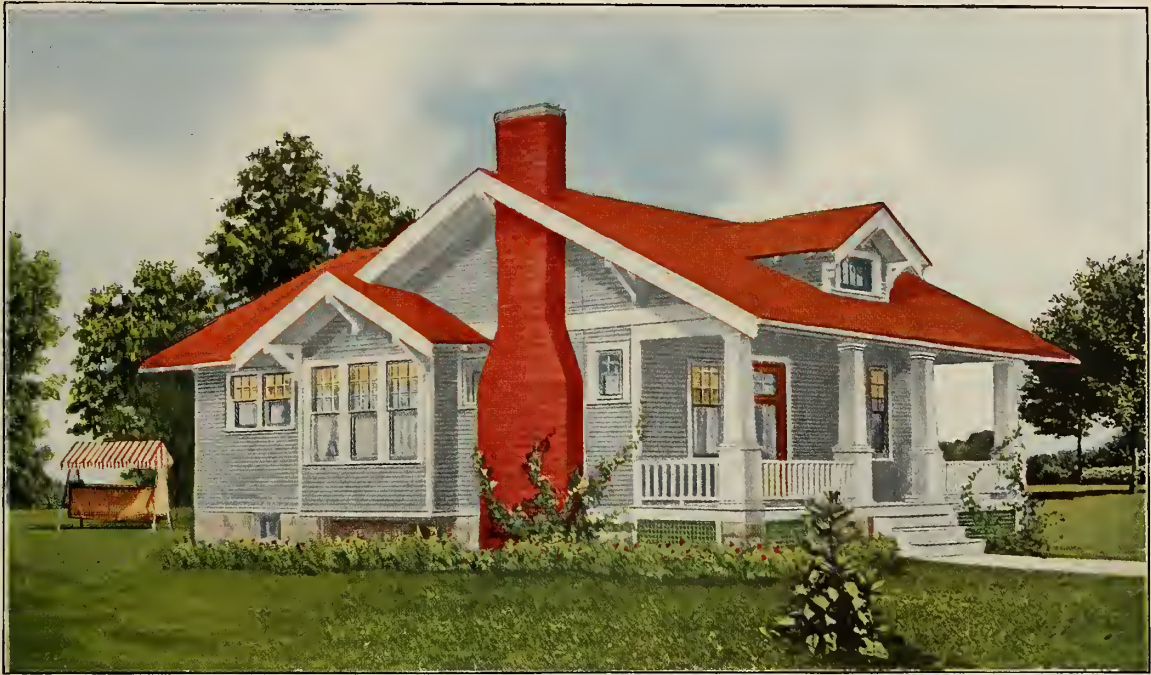
Ideal in every respect is this charming Home. The exterior is a typical bungalow with its low roof and broad appearance. The large front porch with square tapered porch columns and roof brackets add to the attractiveness of the design. The interior could not be improved upon.

The living-room is provided with an abundance of windows and an attractive fireplace and has a large coat closet. The front bedroom may also be used as a den or music-room. The dining-room is provided with an attractive bay window, in which a seat could be placed if desired. Note the central hall way giving access to the bedrooms and the bathroom, with a large coat closet and a linen closet opening from the hall. Each bedroom is likewise provided with a closet.

The kitchen is well arranged with cellar stairway and rear entrance at grade.

The exterior of this bungalow can be treated either with siding or brick veneer.



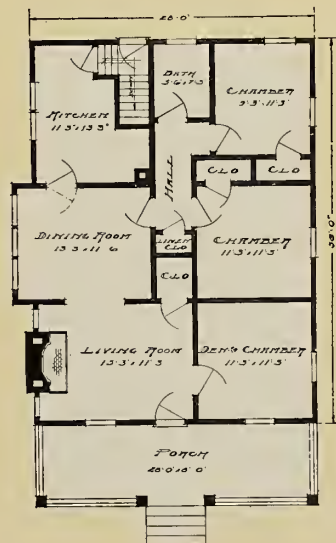


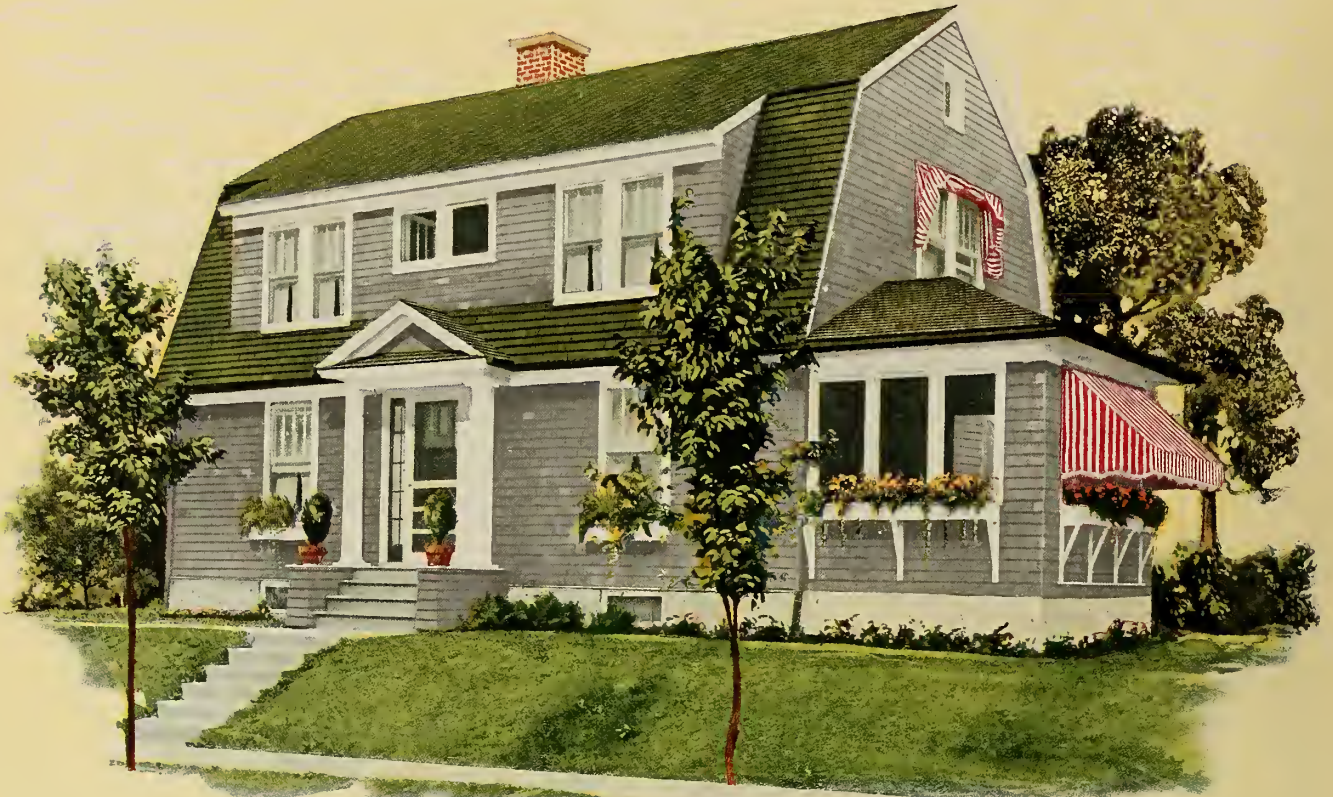
An Attractive Floor Plan

This Home, while bearing some points of resemblance to the one on the opposite page, is worked out on somewhat more economical lines, to fit a more slender purse, and while it lacks some of the individual and attractive features of its neighbor, the plan is worked out on similar lines, and is equally desirable from the space-saving standpoint and that of convenience in arrangement.

The long sloping lines of the roof and the built-up brackets, supporting the wide eaves make the exterior of the true bungalow type, and make this a truly attractive house for the suburb or city lot.

The living- and dining-rooms are large enough for comfort, and are particularly well arranged and well lighted. The bedrooms are provided with closets, and there are in addition a large coat closet and a linen closet.





A Typical Colonial Home with Sun Porch

THIS is an example of distinction in the practical residence.

The gambrel roof and the cut off gable ends are reminders of Old Dutch Colonial architecture. The entrance with its gabled hood, supported by round pillars adds dignity, and gives just the desired protection to the hall.

The entrance separate from the living porch is always an advantage. Thus the porch is left, to be used almost as a room, and not also as a passageway. This placing of the porch also leaves the living and dining room windows free to air, light and sun.

The plan is open on one side through the dining room, on the other across the hall and living room beyond, to the sun porch, affording house width ventilation and view. The coat closet at the rear of the hall is conveniently situated, practically out of view of the living rooms, but near to them, and also to the front entrance.

The well proportioned big family room, made to seem even larger by the wide opening into the hall, and French doors

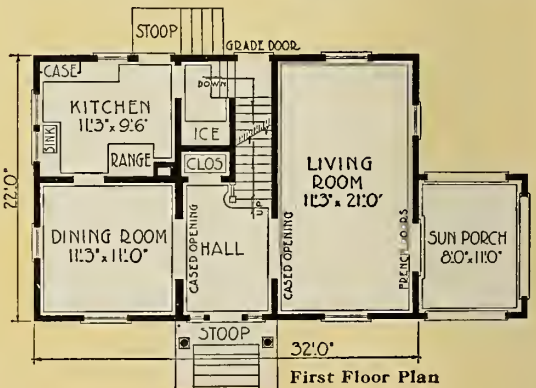
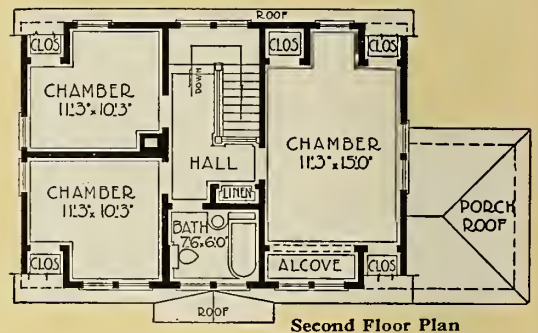
onto the sun porch, has ample furniture space. This room is unusual in that it receives light and air from practically four directions. The sun porch can easily be made a real part of the house, at only a slight additional expense.

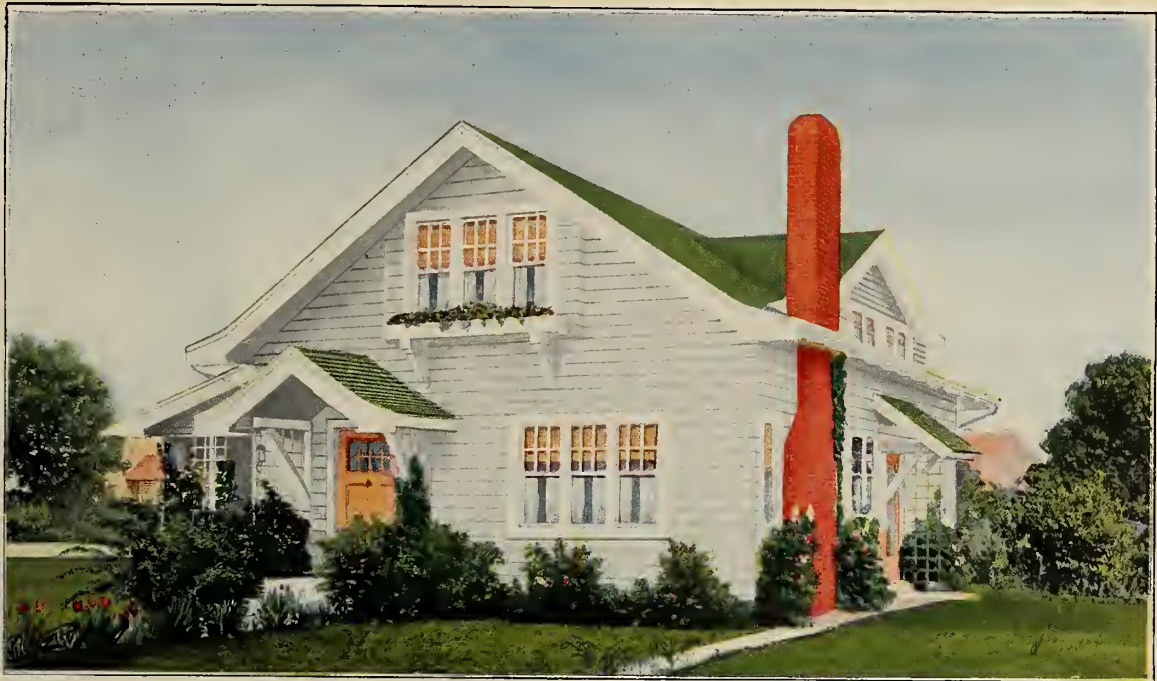
The kitchen is a handy work room, with its built-in kitchen ease and work table, conveniently placed in regard to both sink and range.

The outside rear door and basement stairs lead from the entry off the kitchen, where there is also space for the refrigerator, easily accessible from the kitchen and the outside door, to the delight of both the ice man and the housewife.

The upstairs hall which takes up no unnecessary room brings one to the bath, linen closet and three well sized bed rooms, all with good closet space. The linen closet is of our stock design. The bed room to the right affords three closets, an unusual luxury, indeed. It has also been especially favored with windows in three directions.

The attractive shingled walls add greatly to the appearance of this home.





A Bungalow of Semi-Colonial Treatment

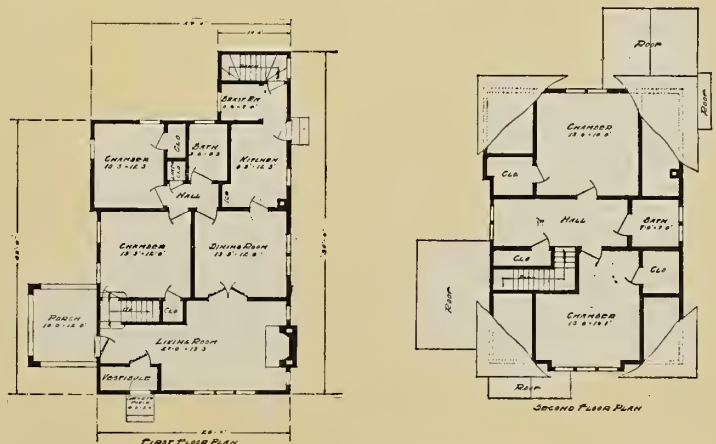
This beautiful home, while designed along Colonial lines, still retains the cozy and homelike appearance which is associated with the Bungalow. The large triple-grouped windows, the wide spreading eaves, the flower boxes, and the outside chimney all combine to make this one of the most attractive designs illustrated. The wide siding or shingles used for the exterior wall covering also lend an indefinable "scale" to the design.

The interior is especially well planned for a large family. Note the spacious living-room, with the inviting open stairway and the cheery fireplace. This room, not being obstructed by the porch, which is placed on the side of the house for privacy, is very well lighted.

The Dining-room, kitchen, breakfast room and rear stairs, are admirably arranged for service and convenience.

The two bedrooms and bath on the first floor are supplemented by two very large bedrooms and bath on the second floor. Ample closet and storage space is provided, not only for the bedrooms, but also for coats and linen.

One commendable feature of this house is the ease with which the second floor may be left unfinished. This work can be done at any convenient time, the first floor in the meantime providing all the room that is required for the ordinary family.





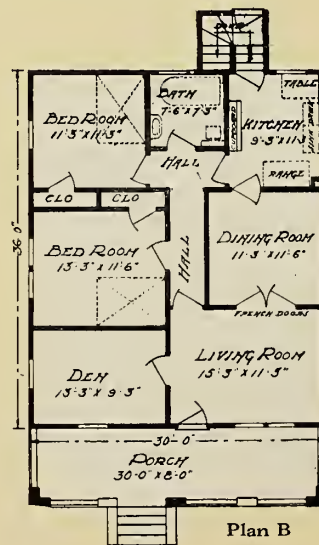
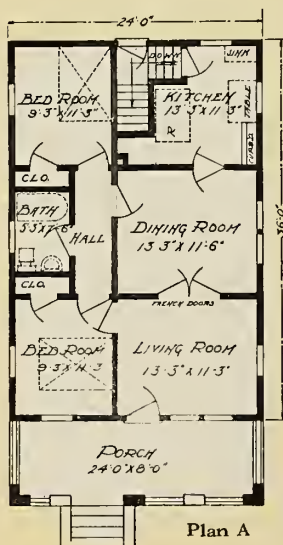
Very Complete Yet Economical

The exterior of this bungalow is treated with siding below the window sills, while the upper part is covered with shingles, stained a soft brown, the contrast with the white painted trim creates a pleasing color effect, while the simple lines of the roof are always in good taste.

Two plans are shown to go with this exterior. Both provide large living porch across the front, while both are economical and convenient in interior arrangement.

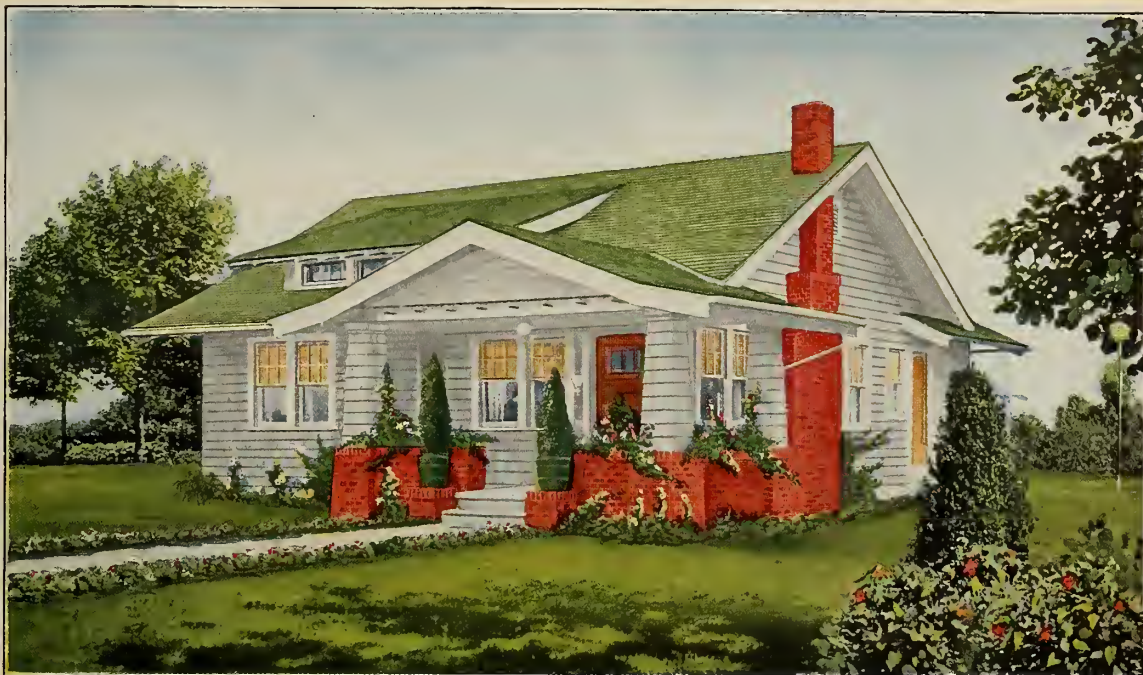
PLAN "A" shows a living-room and dining-room with French doors between. The two bedrooms and bath are arranged to open from a small private hall; both bedrooms having large closets. The kitchen is well arranged for housework, and the grade entrance in connection with the cellar stairs, is especially convenient.

PLAN "B" shows an additional room which may be used as a den or bedroom. This plan is also most conveniently arranged for circulation, both bedrooms, the bath and the kitchen opening from the small private hall.





A HOME OF YOUR OWN



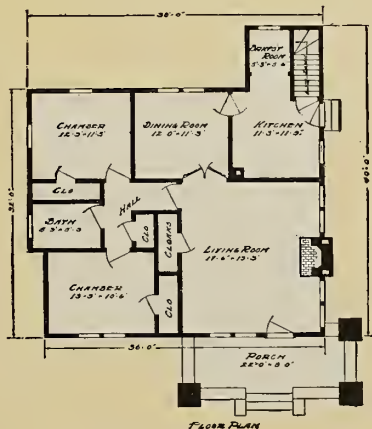
An Impressive Complete Home

The long spreading lines of this charming bungalow are beautifully adapted to our prairie country. Note the color combination of green roof, white painted or stained woodwork, and red brick chimney and terraced porch.

The feature of this plan is the magnificent living-room with its central fireplace and window walls. The other rooms are equally attractive and French doors lead into a dining room which opens up a vista through the house from front to back.

Passing through the double swinging door to the kitchen, note that in addition to an excellently arranged and workable kitchen, the designer has provided a small breakfast-room, a feature which will be appreciated by the busy housewife.

The bedrooms and bathrooms are disposed around a small hall, opening from the living-room. This insures privacy and convenience for these rooms and provides an effectual separation as locating them on the second floor. This idea does away with the only objection to the bungalow idea. Note also that four large closets are provided.





A Distinctive Home, Exceptionally Well Planned

ART and economy are combined in this home.

The gable roof with shingles running to the second story window sills, cut off with the panels and siding below, is a pleasing treatment, while the stately entrance connected with sun porch to the side, gives the low horizontal lines, adding balance to the whole design.

Entering through the beautiful door, fitted with bevel plate glass, you step into a well proportioned and large living room—you are pleased with the vista confronting you. Directly to the right is the open stairway which leads to the second floor, and a handy closet for your wraps, and also a direct entrance to the kitchen beyond.

The living-room appears even larger as you look the length of it, and through the French doors to the inviting sun porch beyond.

Your attention is then arrested by the plaster colonnade which is similar to the illustration shown on the colored insert in this book. Here you find a dining-room of just the right proportions, well flooded with light from three directions. The rear wall is gaced with a large and handsome built-in buffet. It is fitted with a plate glass mirror back—and art glass china closet doors, all of which is included in the price for the home at no extra cost. It has three big wide drawers to keep the table linen in, so that it will not be necessary to fold it, and two smaller drawers for silverware, all below the heavy polished top, which of course, can be utilized for exhibiting cut glass and fancy hand-painted china.

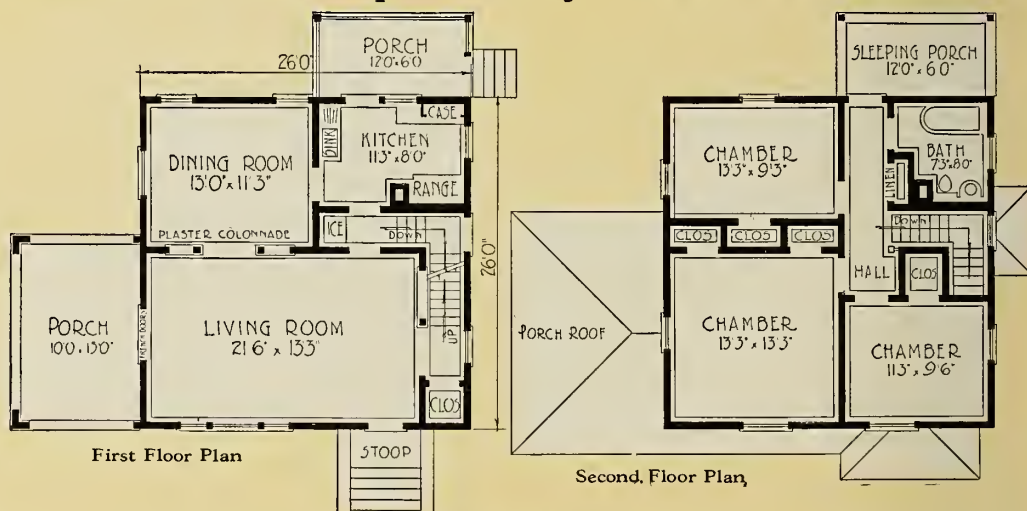
The kitchen is a model—notice it is close at hand either from the

front entrance, dining room, rear entrance or basement. The work table and wall cases are placed at the most advantageous points.

This wall case and work table are similar to the design shown on the colored plate in the book. The latticed porch has sufficient room for placing your ice box on it. The basement extending under the house proper is easily reached from the kitchen or from the outside door which is on the same level with the sidewalk.

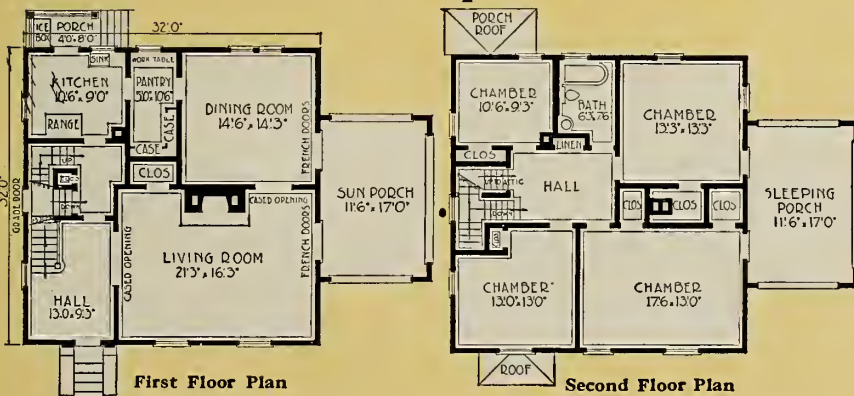
The arrangement of the second floor is ideal. All three chambers have windows in two walls—unusually large closets are provided.

The one front chamber has two closets, a feature that will be appreciated by any housewife. The linen closet is close at hand to all bed rooms as well as to the bath, and there is nothing left to be desired in the bath itself.





An Impressive Colonial Home



The large coat closet at the left of the fireplace is a convenience that will be appreciated.

The unique feature of this plan, and the one which has endeared it to builders in all parts of the country is the porches. The living porch, with French doors opening from both living room and dining room gives an air of spaciousness unusual in a home of this size. It practically doubles the size of the living room and makes an ideal breakfast porch at the same time.

The large dining room with excellent window and wall space, permits of an excellent view in three directions.

The butler's pantry between this and the kitchen keeps kitchen sights, sounds and odors well removed. The pantry case is a special design, extending around two sides of the kitchen itself will prove to be a comfortable and convenient place in which to work.

The hob nails of the ice man's boots need give no terror here, for the refrigerator can stand on the back porch or in the inner hall. Also note the broom closet here. From the kitchen a combination stairway leads up to the main-stair landing. Under these stairs is a grade door, leading both to the kitchen and the basement. There is also a door, leading into the front hall and stairs to the second floor go up from this hall also.

The basement is extended under the house proper, assuring ample room for furnace, coal and wood rooms, fruit cellar and laundry, while seven cellar sash, which we furnish, promise ample light.

Upstairs are four well lighted rooms and plenty of closet space. Light and ventilation has been given equal attention everywhere, for each room has two exposures. The sleeping porch is unusually large and airy, and can be reached from two of the chambers.

The linen closet is also conveniently placed. From the square upper hall, stairs lead to the attic, which is all floored, and well lighted by the dormers at the front and side.

THIS is a 365 day in the year house, one that assures you annually of twelve months of pleasure and satisfaction.

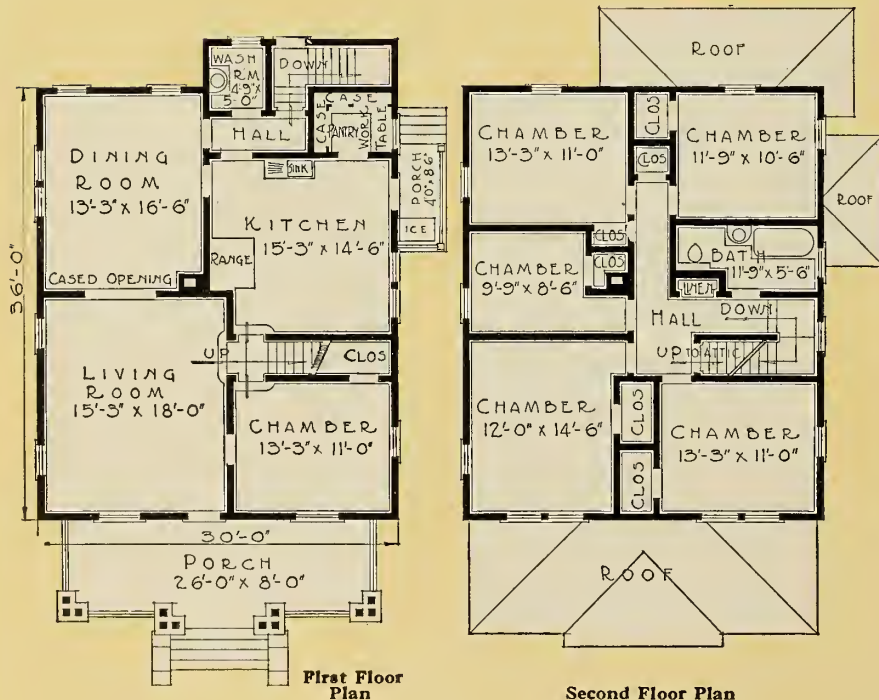
The plain substantial lines, the broad shuttered Colonial windows, the living and sleeping porch, all bespeak a house that is built with comfort in mind. Since there is always a fondness for Colonial architecture, this house will remain equally satisfactory as time goes on.

The Colonial entrance, with its red brick steps, attractive hood and ornamental brackets, is most inviting, and well in keeping with the general scheme of the house.

From the hall one gets a charming view across the wide living room, and through the French doors to the sun porch, on the other side. The hall itself is spacious, and so arranged as to leave much space available for the furniture. The big light living room, with the fireplace making cheerful the gloomy days and cold evenings of winter, is in keeping with the rest of plan. It is of ideal proportions and the wall space is ideally arranged to take care of the larger pieces of furniture and leave plenty of room for bookshelves, etc.



A Home of Dignity and Comfort



JUST what it appears to be—an impressive home for the large family. The merits are many—too numerous to give particular mention in the limited space, so we ask you to study the plan very carefully. You are certain to recognize many features which, very likely, are just what you need.

Skill is reflected in every line of this big home—the skill that means perfection. You will appreciate the comfort it offers—and that, after all is the most important feature.

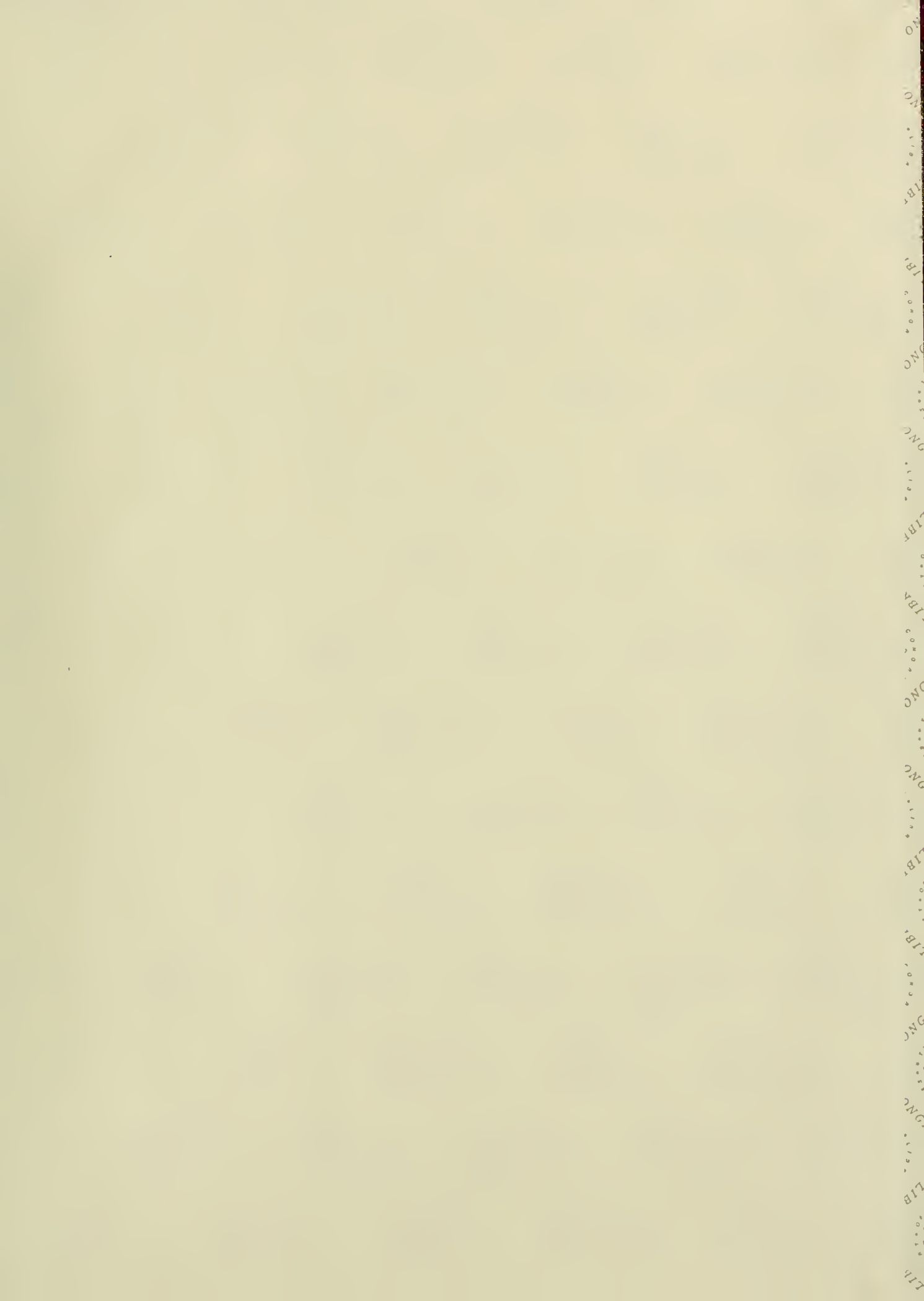
The big front porch with its massive triple columns setting at rail height on masonry piers is a substantial addition that relieves any suggestion of severity. All through your survey of the fine exterior of this home you will find a simplicity of design and perfect balance of proportion—this knowledge gives you the welcome assurance that this home will endure—never will look old-fashioned.

Especially desirable is the wash room to which direct entrance is made by the grade door. The basement stairs also lead down direct from this entrance. The kitchen porch is roomy and has space for the ice box.

The pantry has two big kitchen cases, and a work table. The large kitchen will also be appreciated by the housewife.

All rooms are spacious with perfect light and ventilation. There are plenty of closets, each bed-room has one—in addition there is an extra hall closet and the Gordon-Van Tine linen closet furnished with this home. The stairway is accessible from the living room, kitchen and down stairs bed-room.

Careful study of this plan will convince you of its desirability—every provision has been made in making this the ideal place for the countryman who needs room and lots of it.







LIBRARY OF CONGRESS



0 021 227 987 0